



EXCELLENCE IN  
ENGINEERING SOLUTIONS





100 Years of Engineering Excellence

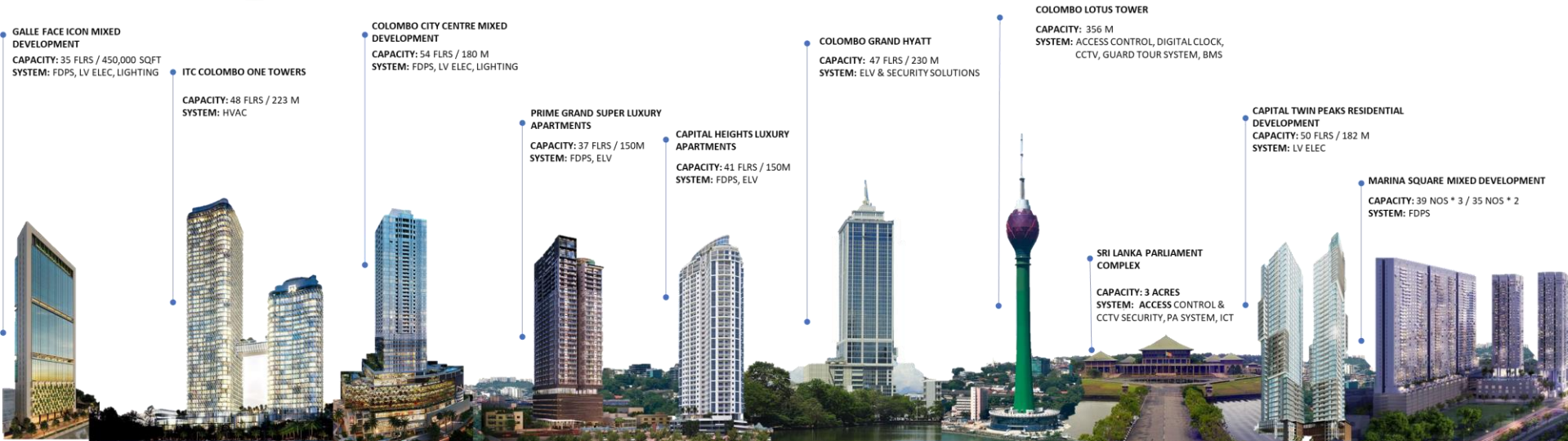
## ABOUT US



SRI LANKA'S NO. 1 CORPORATE



- **Fentons Limited** (Estd. 1921) is the oldest engineering company in Sri Lanka providing integrated value added solutions to diverse clientele.
- We are proud to be a member of Hayleys PLC which was ranked Sri Lanka's Number One Corporate ( LMD Top 100 and Business Today Top 40 )
- **Hayleys PLC** is also the first Sri Lankan listed company in the Colombo Stock Exchange to surpass an annual revenue of USD One Billion.





# THE WORLD OF HAYLEYS



Eco Solutions



Hand Protection



Purification



Textile



Construction Materials



Agriculture



Plantations



Tea Exports



Investments & Services



Aviation & Travel



BPO



Retail



Power & Energy



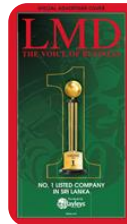
Engineering Solutions



Logistics Solutions



Leisure & Tours



ELECTRICAL



FIRE



HVAC



PLUMBING



SOLAR



LIGHTING



ICT



ELV



UPS



FACILITIES MGT

# AWARDS & ACCOLADES



**CIDA NATIONAL  
AWRDS FOR ELECTRO MECHANICAL  
CONSTRUCTION  
2018  
MARRIOT RESORTS AND SPA,  
WELIGAMA BAY**



**BEST COMMERCIAL ROOFTOP PV  
COMPANY OF THE YEAR /  
ROOFTOP SOLAR ENABLER OF THE YEAR  
ASIAN SOLAR ENERGY LEADERSHIP  
AWARDS  
2021**



**ANNUAL REPORT AWARDS  
CA SRI LANKA  
2021  
SILVER AWARD**

# OUR CREDENTIALS

100+

Established in 1921 as an electrical company, Fentons Limited has grown to provide end to end MEP solutions.



Leader in the provision of MEP solutions.



Largest Rooftop PV Solar Provider in Sri Lanka with over 125MW of Installations island wide.

Qualification	Staff
SENIOR ENGINEERS / ENGINEERS	210
ASSISTANT ENGINEERS/SUPERVISORS	223
QS & DRAWINGS DEPT	82
OTHER TECHNICAL STAFF	242
OPERATION STAFF FOR PROJECTS (SAFETY, STORES, OPERATIONS ASSISTANTS, DRIVERS)	91
SALES & MARKETING	58
SHARED SERVICES (FIN, SC, HR, IT, ADMIN)	102
<b>TOTAL</b>	<b>1008</b>
<b>REGISTERED LABOUR CONTRACTORS</b>	<b>95</b>
<b>LABOUR CONTRACTORS' MANPOWER</b>	<b>3500</b>



EM1



ISO 9001 / ISO 14001 / ISO 45001 / ISO 50001



ශ්‍රී ලංකා ප්‍රතිත්‍ය ධූෂණ අධිකාරිය

இலங்கை நிலைபெறுதகு வலு அதிகாரசபை

Sri Lanka Sustainable Energy Authority



## 1. ELECTRICAL





## EXPERIENCE COUNTS

- Medium Voltage
- Low Voltage
- Extra Low Voltage
- Energy Audits
- Fibre Optic & Copper Cabling
- Professional Lighting
- Lightning/surge protection and electrical earthing systems for all networks



# KEY PROJECTS: LV ELECTRICAL

## HIGH RISE & COMMERCIAL DEVELOPMENTS

- GALLE FACE ICON MIXED DEVELOPMENT
- COLOMBO CITY CENTRE MIXED DEVELOPMENT - RESIDENTIAL & RETAIL AREA
- LONDON STOCK EXCHANGE GROUP MALABE IT CAMPUS

## HIGH RISE RESIDENTIAL DEVELOPMENTS

- CAPITOL TWIN PEAKS RESIDENTIAL PROJECT
- 7TH SENSE APARTMENT COMPLEX, COLOMBO 07
- EMPIRE RESIDENCIES, COLOMBO 02

## HOSPITALITY

- MARRIOTT RESORT & SPA - WELIGAMA BAY
- ARALIYA UNAWATHUNA HOTEL & RESORT
- MARRIOTT NEGOMBO FIVE STAR RESORT DEVELOPMENT FOR GREENER WATER (PVT) LTD

## INDUSTRIAL

- CAMSO LOADSTAR WAREHOUSING & LOGISTICS FACILITY
- CEYLON BEVERAGE CANNERIES FACTORY FACILITY, HORANA BOI FACILITY
- ADVANTIS 3PL LOGISTICS & WAREHOUSING FACILITY

## HEALTHCARE

- CARDIOLOGY UNIT FOR TEACHING HOSPITAL, BATTICALOA
- KARAPITIYA HOSPITAL
- HEMAS HOSPITALS, THALAWATHUGODA







## 2. LIGHTING



## CONNECTED LIGHTING

- Provision of end to end lighting solutions
- 30 years of expertise and leadership in the lighting industry
- Advanced energy-efficient lighting solutions
- Clean Room Lighting Solutions
- Solutions for all segments: Road lighting, office & industrial, Sports, hospitality and Domestic projects



# KEY PROJECTS: PROFESSIONAL LIGHTING

## COMMERCIAL & HIGH RISE DEVELOPMENTS

- ORION CITY IT PARK AND MIXED DEVELOPMENT
- WESTERN PROVINCIAL COUNCIL
- COLOMBO CITY CENTER MIXED DEVELOPMENT

## HIGH RISE RESIDENTIAL DEVELOPMENTS

- CENTERPOINT RESIDENCIES
- ARGYL VILLAS, HATTON

## HOSPITALITY

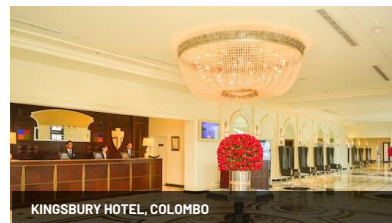
- GALLE FACE HOTEL, COLOMBO
- MOVENPICK HOTEL, COLOMBO
- KINGSBURY HOTEL, COLOMBO

## INDUSTRIAL

- ADVANTIS 3PL WAREHOUSING FACILITY
- ELEPHANT HOUSE ICE CREAM (COLOMBO ICE COMPANY) FACTORY
- HAYLEYS FABRICS PLC, NATHUPANA

## INFRASTRUCTURE WORKS

- BANDARANAYAKE INTERNATIONAL AIRPORT STREET LIGHTING
- KANDY MUNICIPAL COUNCIL, CITY BEAUTIFICATION
- LED STREET LIGHTING FROM INGURUKADE JUNCTION TO ARMOUR STREET







### 3. FIRE



# SAFETY IS OUR PRIORITY

## Detection

- Conventional or Addressable systems
- Fireman's Intercom
- Fire Evacuation Systems
- Gas Detection & Warning Systems

## Protection

- Sprinkler & Hydrant Systems

## Suppression

- Water Mist & Deluge Fire Suppression Systems

 **Simplex**



**BOSCH**

  
**GRUNDFOS**

**wilo**



**tyco** / Fire & Building  
Products

**MORLEY IAS**  
FIRE SYSTEMS



# KEY PROJECTS: FIRE

## HIGH RISE & COMMERCIAL DEVELOPMENTS

- MARINA SQUARE MIXED DEVELOPMENT
- COLOMBO CITY CENTRE MIXED DEVELOPMENT - RESIDENTIAL & RETAIL AREA
- MANNING MARKET RELOCATION PROJECT

## HIGH RISE RESIDENTIAL DEVELOPMENTS

- CAPITAL HEIGHTS LUXURY APARTMENTS, RAJAGIRIYA
- PRIME GRAND LUXURY RESIDENCIES, COLOMBO
- SEVENTH SENCE APARTMENT COMPLEX, COLOMBO 07

## HOSPITALITY

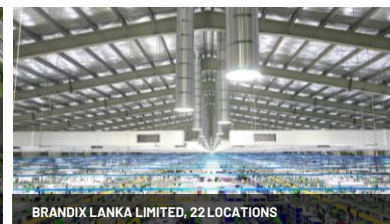
- MARRIOTT RESORT & SPA - WELIGAMA BAY
- DOUBLE TREE BY HILTON, WEERAWILA
- COLOMBO INTERCONTINENTAL HOTEL, (PEARL GRAND)

## INDUSTRIAL

- BRANDIX LANKA LIMITED, VARIOUS LOCATIONS
- A320 HANGER BAY FOR SRI LANKAN AIR LINES AT KATUNAYAKE INTERNATIONAL AIRPORT
- ADVANTIS 3PL LOGISTICS FACILITY

## HEALTHCARE FACILITIES

- PRE CLINICAL DEPARTMENT FOR THE UNIVERSITY OF COLOMBO MEDICAL FACULTY
- CARDIOLOGY UNIT OF VAVUNIYA DISTRICT GENERAL HOSPITAL
- ASIRI HOSPITAL, KANDY







## 4. MECHANICAL VENTILATION & AIR CONDITIONING (MVAC)



## MVAC SOLUTIONS

- Industrial & Commercial Air Conditioning solutions
- Commercial Air Condition solutions for SME's
- Pressurization & Ventilation solutions
- Air Purification Solutions & Scrubbers
- Pressurisation Solutions
- HVAC Control Panels
- Fire Rated Ducts

**SAMSUNG**



**TOSHIBA**

**SHINWA**  
COOLING TOWER



**wilo**



# KEY PROJECTS: MVAC

## COMMERCIAL & HIGH RISE DEVELOPMENTS

- DISTRICT SECRETARIAT, POLONNARUWA
- SIYAPATHA FINANCE HEAD OFFICE

## HIGH RISE RESIDENTIAL DEVELOPMENTS

- ITC COLOMBO ONE TOWERS
- SUPERLATIVE APARTMENTS, RAJAGIRIYA

## HOSPITALITY

- HILTON COLOMBO
- CINNAMON RED, KANDY
- RIU HOTEL & RESORT, AHUNGALLA

## INDUSTIAL

- DIALOG TIER III DATA CENTER, MALABE
- FLINTEC TRANSDUCERS, KEPS, KOGGALA

## HEALTHCARE

- DISTRICT GENERAL HOSPITAL, GAMPAHA
- MELSTA HOSPITALS, RAGAMA (FORMERLY BROWNS HOSPITAL)

## INFRASTRUCTURE

- SOUTH ASIA GATEWAY TERMINALS, COLOMBO PORT
- IMPORT CARGO TERMINAL OF SRI LANKA



ITC COLOMBO ONE TOWERS



HILTON COLOMBO



ARRIVAL WALKWAY, BIA



DIALOG TIER III DATA CENTER



MELSTA HOSPITALS, RAGAMA

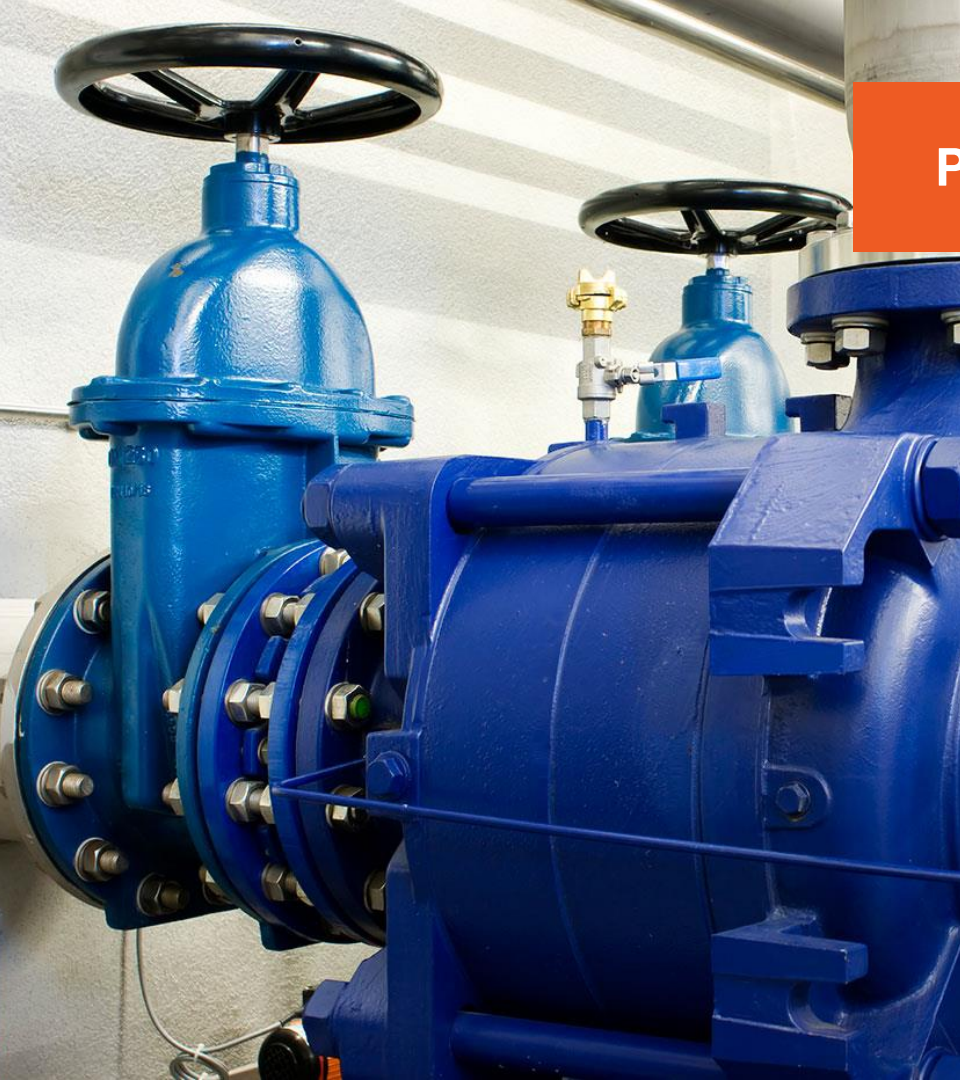


SOUTH ASIA TEXTILES LIMITED





## 5. PLUMBING & GAS



## PLUMBING & GAS

- Hot and cold water systems
- Sewer and waste water systems
- Rainwater systems
- Water purification plants
- Swimming pools, Transfer pumps & Booster pumps
- Centrifugal pumps and circulation pumps in water supply systems
- Gas piping systems



# KEY PROJECTS: PLUMBING & GAS

## COMMERCIAL & HIGH RISE DEVELOPMENTS

- TURRET TOWER, COLOMBO 07
- VALLIBEL FINANCE HEAD OFFICE
- ACADEMY OF DESIGN, COLOMBO INNOVATION TOWER

## HOSPITALITY

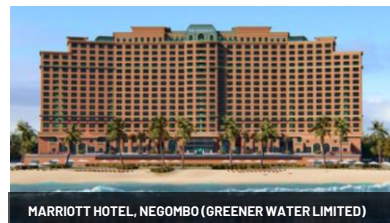
- HILTON HOTEL, COLOMBO
- MARRIOTT HOTEL, NEGOMBO FOR GREENER WATER LIMITED
- AMBASSADOR RESORT AND SPA, MIRISSA
- KINGSBURY HOTEL, COLOMBO

## INDUSTRIAL

- SUNQUICK LANKA(PVT) LTD RTD FACTORY

## HEALTHCARE

- VAVUNIYA DISTRICT GENERAL HOSPITAL, CARDIOLOGY UNIT
- KILLINOCHCHI BASE HOSPITAL







## 6. Security & Surveillance



## SECURITY & SURVEILLANCE

- CCTV (security surveillance) & Access Control
- Vehicle & Human Barriers and entry/exit protection
- Security Intercom, Intruder Detection and perimeter protection
- Unmanned, remotely monitored electronic security solutions for bank branches
- IPTV, MATV and Public Address systems

**Honeywell**



**BOSCH**

**Unity**  
United Technologies

Messerschmitt  
Systems AG

**IKUSI**  
velatia

**alhua**  
TECHNOLOGY

# KEY PROJECTS: SECURITY & SURVEILLANCE

## COMMERCIAL & HIGH RISE DEVELOPMENTS

- COLOMBO LOTUS TOWER
- PEOPLES BANK (250 BRANCHES)
- SRI LANKAN AIRLINES LIMITED, BIA

## HIGH RISE RESIDENTIAL DEVELOPMENTS

- LUNA TOWERS RESIDENTIAL DEVELOPMENT
- PRIME GRAND RESIDENCIES
- HAVELOCK CITY APARTMENTS (STAGE II)

## HOSPITALITY

- SHANGRI - LA HOTEL, COLOMBO
- PARK INN BY RADDISSON, COLOMBO
- ARAIYA RED, NUWARA ELIYA

## INDUSTRIAL

- SANDIA USA-RADIOACTIVE CARGO STORAGE BIA
- ANSELL LANKA PVT LIMITED
- TOYOTA LANKA (PVT) LTD

## PUBLIC WORKS

- SRI LANKA PARLIAMENT COMPLEX
- SOUTHERN EXPRESS WAY STAGE I, II & III
- OUTER CIRCULAR HIGHWAY



COLOMBO LOTUS TOWER



SRI LANKA PARLIAMENT COMPLEX



ARALIYA UNAWATUNA LUXURY RESOT



LUNA TOWER APARTMENTS



TOYOTA LANKA (PVT) LTD



COLOMBO OUTER CIRCULAR HIGHWAY





## 7. ICT

# TRUSTED CONNECTIONS

- IP PABX systems
- Call centers, IVR and voice logger systems
- Specialized hotel telephone instruments
- Data switches, routers, firewalls and LAN/WAN active components
- Wi-Fi networks
- Data Centre Server Storage & Backup solutions
- Microwave private radio networks and multiplexers
- Open Source Applications and services



# KEY PROJECTS – INFORMATION & COMMUNICATION TECHNOLOGY

## COMMERCIAL & HIGH RISE DEVELOPMENTS

- COLOMBO LOTUS TOWER
- DIALOG HEAD OFFICE COMPLEX
- SRI LANKA TELECOM
- SAMPATH BANK PLC

## DATA CENTER SOLUTIONS

- BARATHI AIRTEL
- LONDON STOCK EXCHANGE GROUP
- VIRTUSA LIMITED
- SRI LANKA INSTITUTE OF INFORMATION TECHNOLOGY

## HOSPITALITY

- HILTON HOTEL, COLOMBO
- MARINO SANDS COLOMBO
- DOUBLE TREE BY HILTON, WEERAWILA

## PUBLIC WORKS

- SRI LANKA PORTS AUTHORITY
- AIRPORT & AVIATION AUTHORITY OF SRI LANKA
- WESTERN PROVINCIAL COUNCIL
- NANO TECHNOLOGY INSTITUTE OF SRI LANKA







## 8. UPS & Battery Solutions



## MISSION CRITICAL POWER

- Supply & Installation of Uninterruptible Power Supplies (UPS) up to 1kVA to 5MVA
- Transient Surge Protection of Facilities
- Protection, Control & Monitoring Solutions
- Supply & Installation of VRLA, Lithium-ion & Nickel-Cadmium Batteries



# KEY PROJECTS - UPS

## DATA CENTER SOLUTIONS

- LONDON STOCK EXCHANGE GROUP 800 KVA
- VIRTUSA CORPORATION 840 KVA
- PEOPLES LEASING PLC 280 KVA
- SAMPATH BANK DATA CENTER 240 KVA
- HUTCH TELECOM 120 KVA

## COMMERCIAL & HIGH RISE

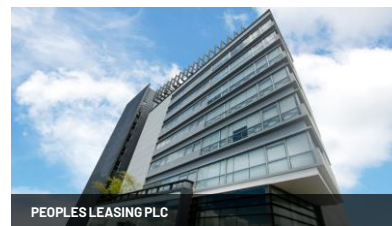
- ASIRI HOSPITAL PLC 280 KVA
- SRI LANKA BROADCASTING CORPORATION 200 KVA
- BUREAU VERITAS CONSUMER PRODUCTS SERVICES LANKA (PVT) LTD 160 KVA

## INDUSTRIAL SOLUTIONS

- CEYLON BISCUITS LIMITED 1,600 KVA
- LANKA TILES PLC 550 KVA
- JF PACKAGING PVT LTD 550 KVA
- PIRAMAL GLASS CEYLON PLC 400 KVA
- MARTIN BAUR GROUP 400 KVA

## PUBLIC WORKS

- AASL - AIR TRAFFIC CONTROL 320 KVA
- DISTRICT GENERAL HOSPITAL, JAFFNA 280 KVA







## 9. RENEWABLE ENERGY SOLUTIONS



## RENEWABLE ENERGY SOLUTIONS

- Solar PV Energy System Engineering, Procurement & Construction (EPC)
- Roof top, Ground mount & Floating Solar PV Systems
- On grid, Off Grid & Hybrid Systems
- Products sourced from Global Tier 1 module manufacturers and industry leading manufacturers of solar inverters

**LONGI**Solar

**JA**SOLAR

  
CanadianSolar



KACO   
new energy.



# 125<sup>+</sup> MW INSTALLATIONS ISLANDWIDE

• HAYLEYS PLC, WELIKANDA (GROUND MOUNTED)	12.5 MW
• MAS HOLDINGS	6 MW
• BRANDIX APPAREL LTD	2.89 MW
• COCA COLA BEVERAGES SRI LANKA	1.9 MW
• CAMSO LOADSTAR (PVT) LTD	1.4 MW
• CEYLON BISCUIT LIMITED	1MW
• HAYLEYS ADVANTIS LIMITED	1 MW
• LAUGFS POWER LIMITED (GROUND MOUNTED)	1 MW
• SIERRA CABLES PLC	1 MW
• HAYLEYS FABRIC PLC	995 KW
• FANTASIA INDUSTRIES (PVT) LTD	913 KW
• PHOENIX INDUSTRIES LIMITED	604 KW
• HATTON NATIONAL BANK	511 KW
• NATIONAL SAVINGS BANK	709 KW
• ST REGIS PACKAGING	400 KW
• COMMERCIAL BANK	272 KW
• DIALOG AXIATA PLC	265 KW
• HALEYS FREE ZONE LTD	261 KW
• MSH PACKAGING INDUSTRIES PVT LTD	251 KW
• LOGIWIZ LIMITED	250 KW
• HTCEY AGRICULTURE AND LIVESTOCK (PVT) LTD	250 KW
• ADAMJEE LUKMANJEE & SONS (PVT) LTD	247 KW
• SRI LANKA NAVY	172 KW
• STAR ROPES	170 KW
• DEWALAKANDA RUBBER FACTORY	165 KW
• BEARWELL ESTATE- TALAWAKELLE	108 KW
• MOTHIA CONFECTIONARY (PVT) LTD	108 KW
• TEACHING HOSPITAL - KURUNEGALA	180 KW





A low-angle, upward-looking photograph of a modern skyscraper with a glass facade. The building is illuminated from within, showing warm yellow lights. The sky is a deep blue. The building's structure is composed of dark metal frames and large glass panels. The perspective creates a strong sense of height and scale.

## 10.FACILITIES MANAGEMENT



## FENTONS SMART FACILITIES

- Comprehensive review & Maintenance of MEP infrastructure to the highest quality standards
- Management Front Desk, Security & House keeping Services
- In Depth Engineering & Technical Support Services



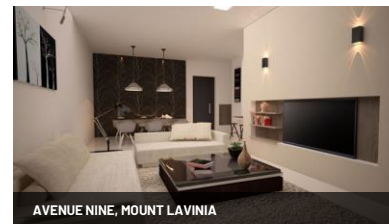
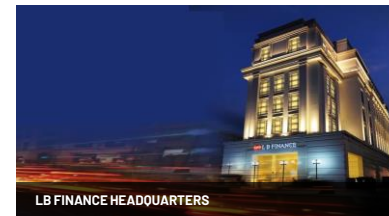
# KEY PROJECTS – FACILITIES MANAGEMENT

## COMMERCIAL

- CENTRAL BANK OF SRI LANKA
- HATTON NATIONAL BANK, COLOMBO
- STANDARD CHARTERED BANK
- DELEGATION OF THE EUROPEAN UNION, COLOMBO
- CAKE LABS, COLOMBO
- HSBC GLOBAL SERVICES CENTRE, RAJAGIRIYA
- LB FINANCE, COLOMBO

## RESIDENTIAL

- FAIRMOUNT RESIDENCIES, RAJAGIRIYA
- AVENUE NINE, MOUNT LAVINIA





A low-angle, upward-looking perspective of several tall skyscrapers reaching towards a blue sky with scattered white clouds. The buildings are modern, with glass and steel facades. The central building is the most prominent, showing a grid-like window pattern. Other buildings frame it on the left and right sides.

## 11. EQUIPMENT TRADING



## EQUIPMENT TRADING

- Distribution of key brands employed by the MEP Industry
- Interactive Concept Center strategically located in the heart of Colombo's retail and wholesale district for construction related materials
- Partnering with top brand and providing a one stop solution under the Fentons Group

**ERA®**

**wavin**

**ASSA ABLOY**

**AR BLUE  
CLEAN**

**tucati**

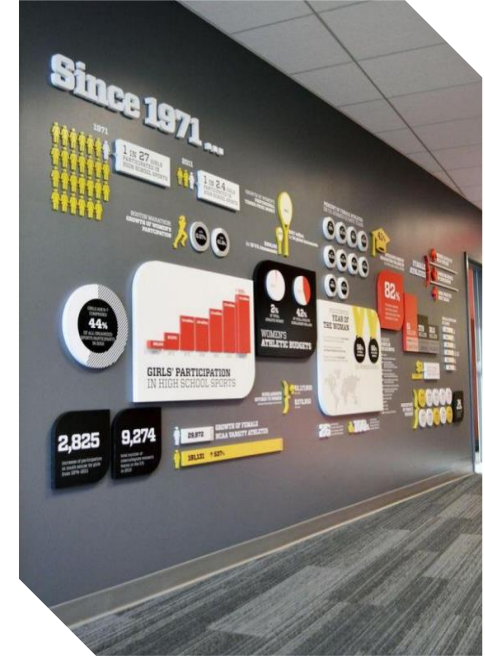
**mediclinics**

**DANIEL  
RUBINETTERIE  
MILANO**

**Delta Duct™**



# PROPOSED CONCEPT CENTER - NAWALA







## 12. INDUSTRIAL & MACHINERY





## INDUSTRIAL & MACHINERY

- Pumps & Related Accessories for Water, Wastewater, and Sewage Industry
- Automation of Water Management & Water Quality Testing Systems
- Design & Installation of Motor Control Panels
- Heavy & Light Machinery for the Construction Industry
- Mid-Range & Industrial Power Generators



**WACKER  
NEUSON**





180, Deans Road, Colombo 10, Sri Lanka.

Tel : + 94 11 2448518

Fax : +94 11 2448517

E-mail : [info@hayleysfentons.com](mailto:info@hayleysfentons.com)

Web : [www.hayleysfentons.com](http://www.hayleysfentons.com)

**HOTLINE 0112 102 102**